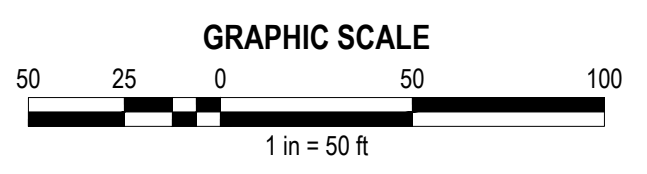
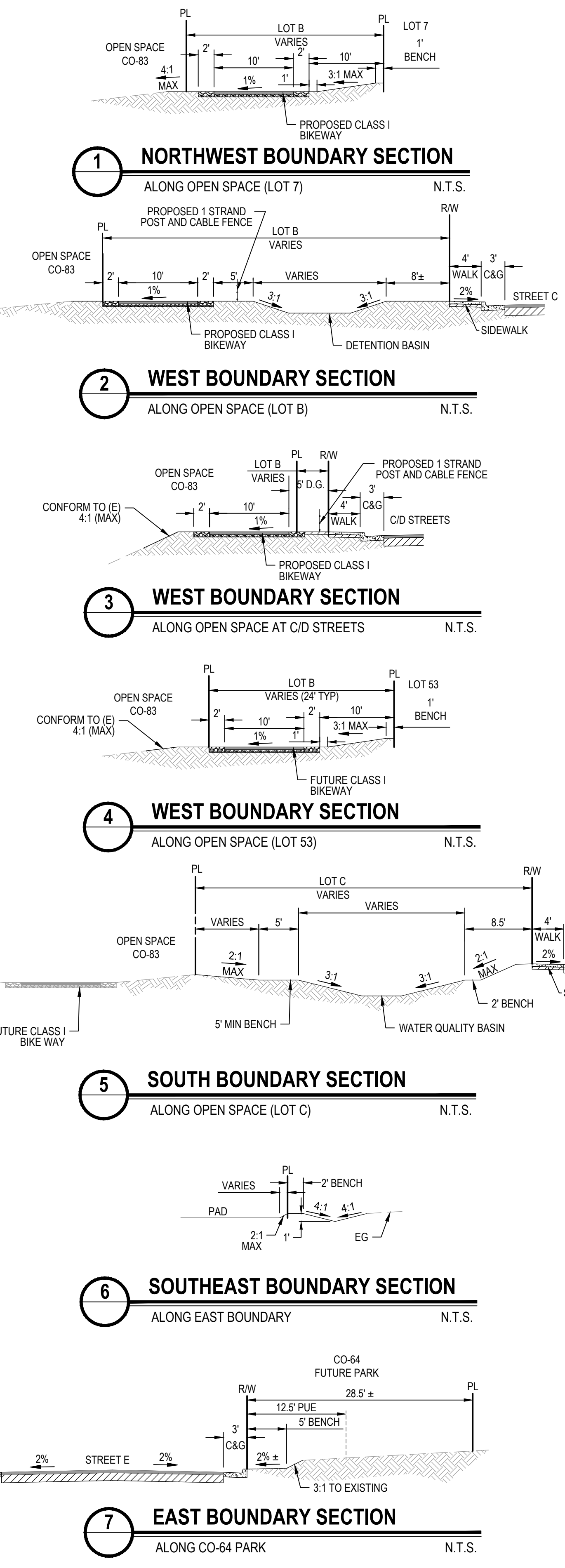
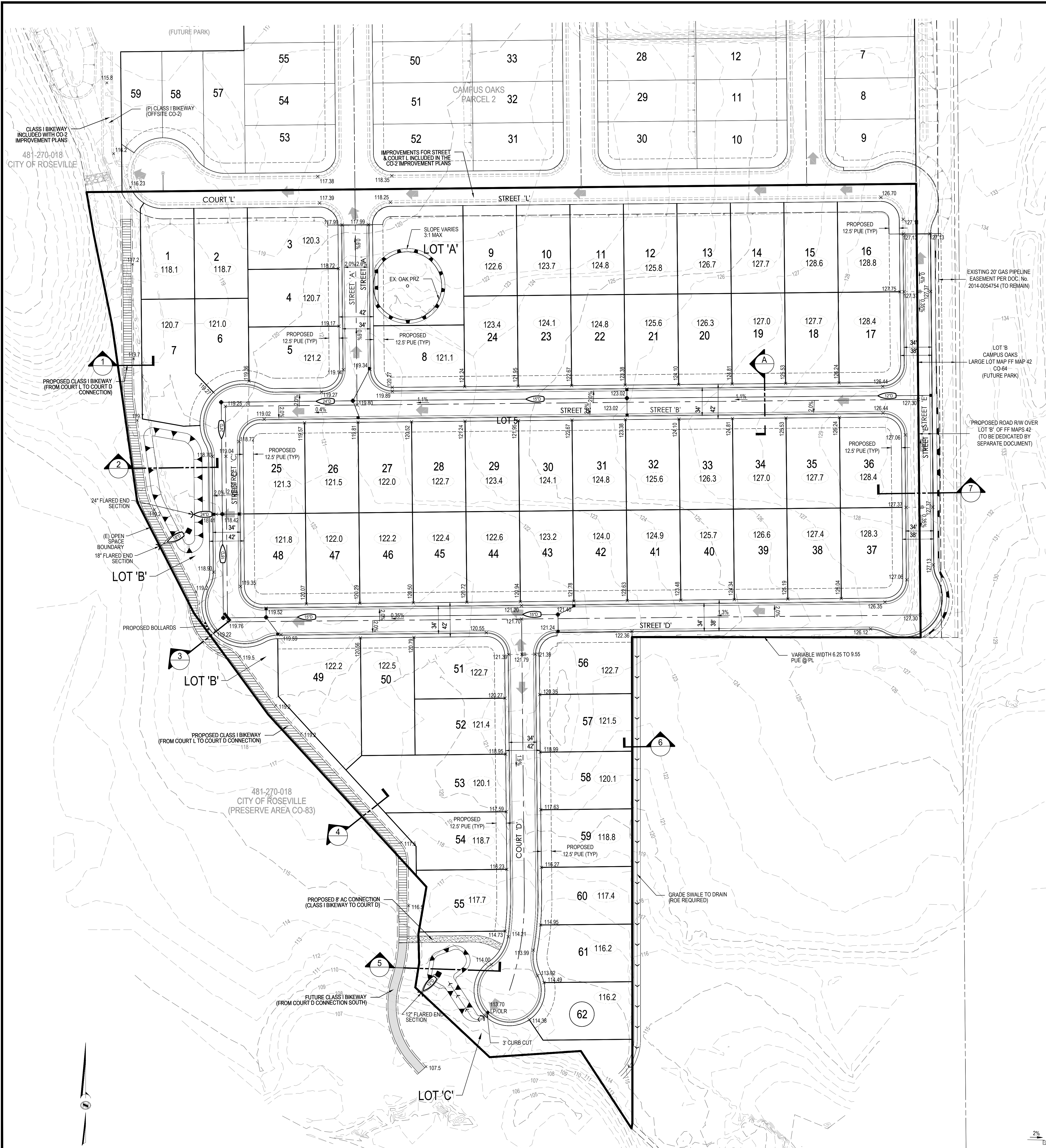
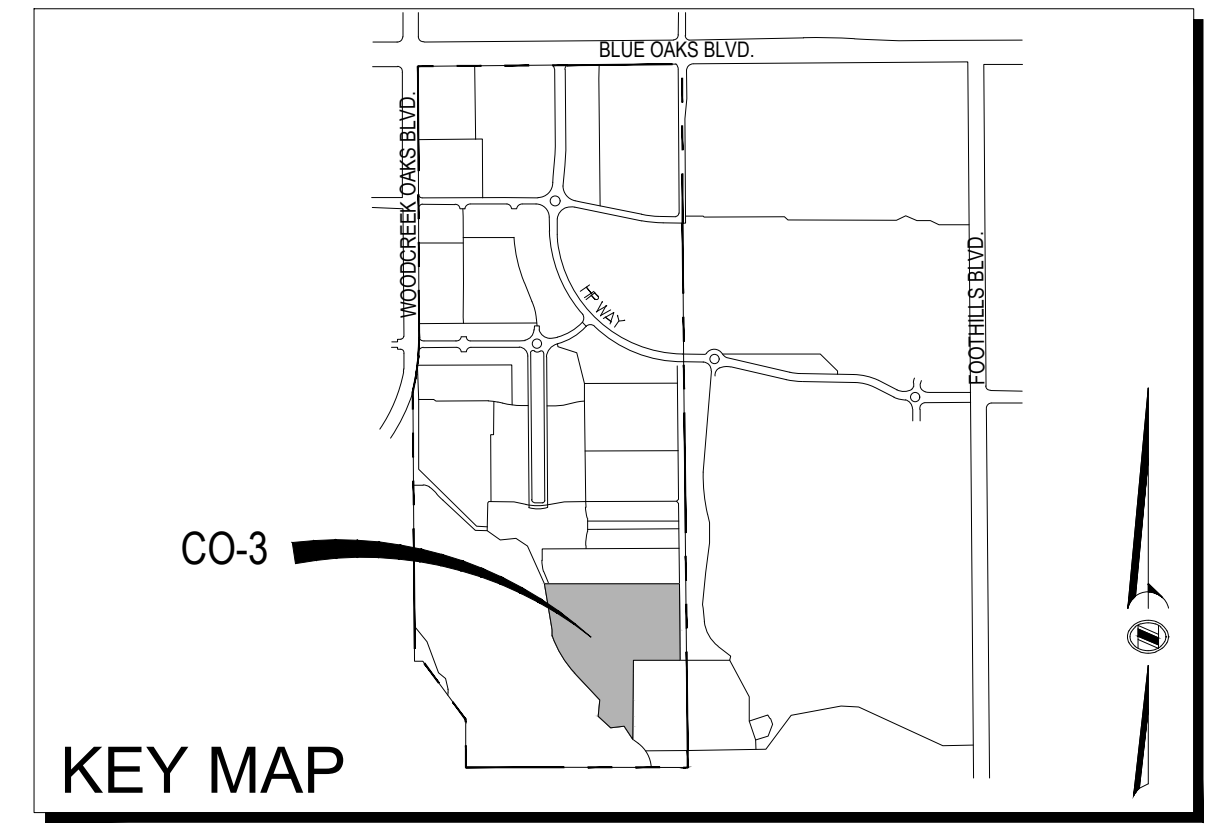
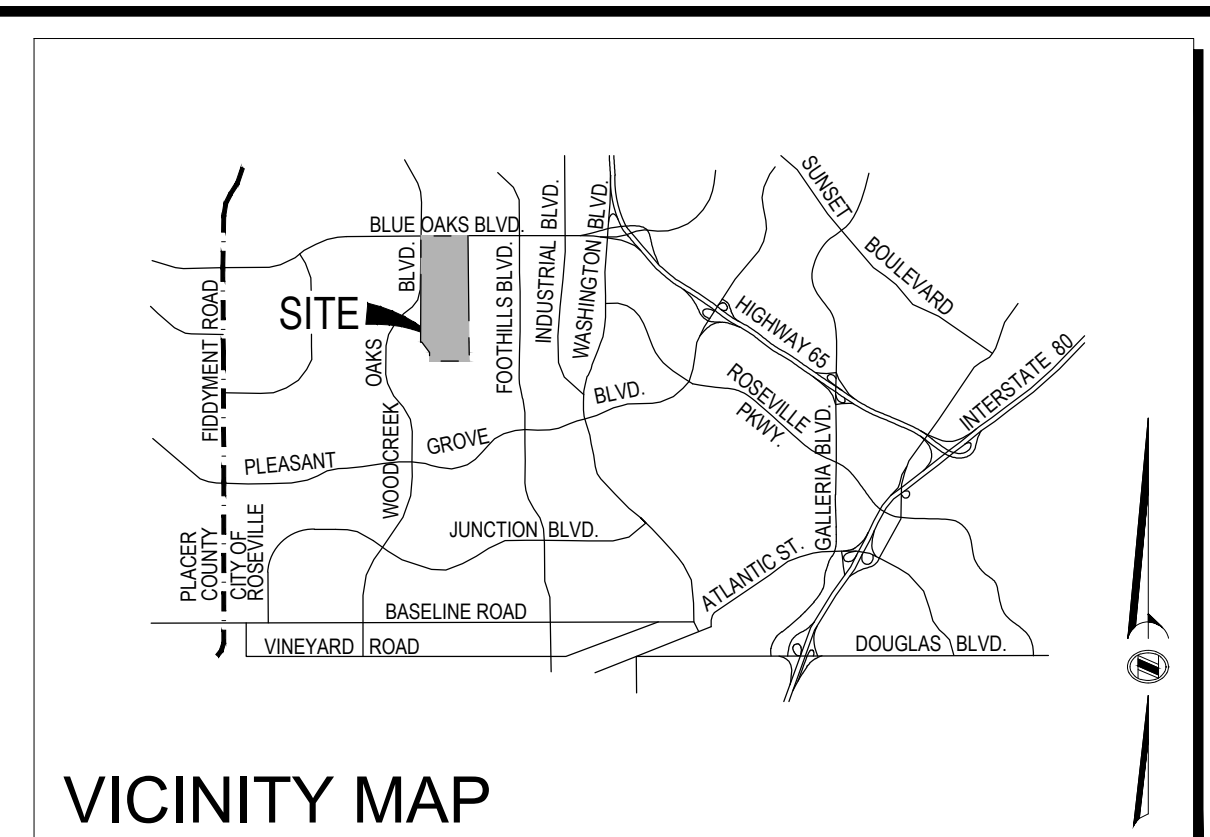


**MORTON & PITALO, INC.**  
 CIVIL ENGINEERING • LAND PLANNING • LAND SURVEYING  
 Folsom • Fresno  
 75 Iron Point Circle, Suite #120  
 Folsom, CA 95630  
 phone: (916) 958-7221  
 web: www.mpieng.com

CONSULTANT

APPROVALS



NO	DATE	DESCRIPTION

REVISIONS

BENCH MARK

ELEV = 112.83

3-1/4" BRASS DISC STAMED L55614, TOP OF CURB WEST SIDE OF DI @ SE CORNER OF WASHINGTON BLVD. & ROSEVILLE PARKWAY @ NE END OF CURB RETURN

COMPUTED BY

DESIGNED BY

DRAWN BY

PROJECT ENGINEER

PROJECT

ENTITLEMENT DRAWINGS FOR  
**CAMPUS OAKS  
 MASTER PLAN**

**CO - 3**  
 ROSEVILLE, CA

DRAWING  
**PRELIMINARY  
 GRADING PLAN**

DATE  
 JUNE 9, 2021

SCALE  
 1" = 50'

JOB NUMBER  
 13-0076-06

SHEET  
**2**

OF  
 3

NOT FOR CONSTRUCTION - PL21-0070

City of Roseville Approval



**MORTON & PITALO, INC.**  
 CIVIL ENGINEERING • LAND PLANNING • LAND SURVEYING  
 Folsom • Fresno  
 75 Iron Point Circle, Suite #120  
 Folsom, CA 95630  
 phone: (916) 984-7221  
 web: www.mpeing.com

CONSULTANT

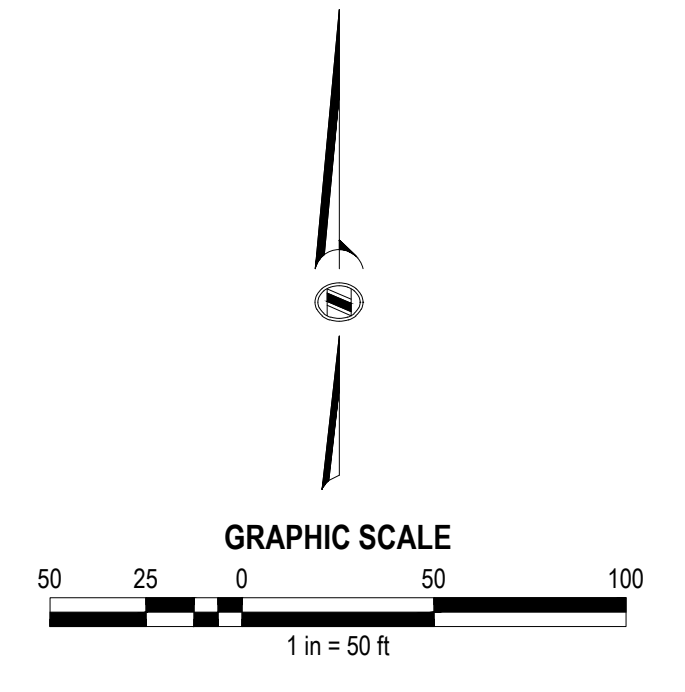
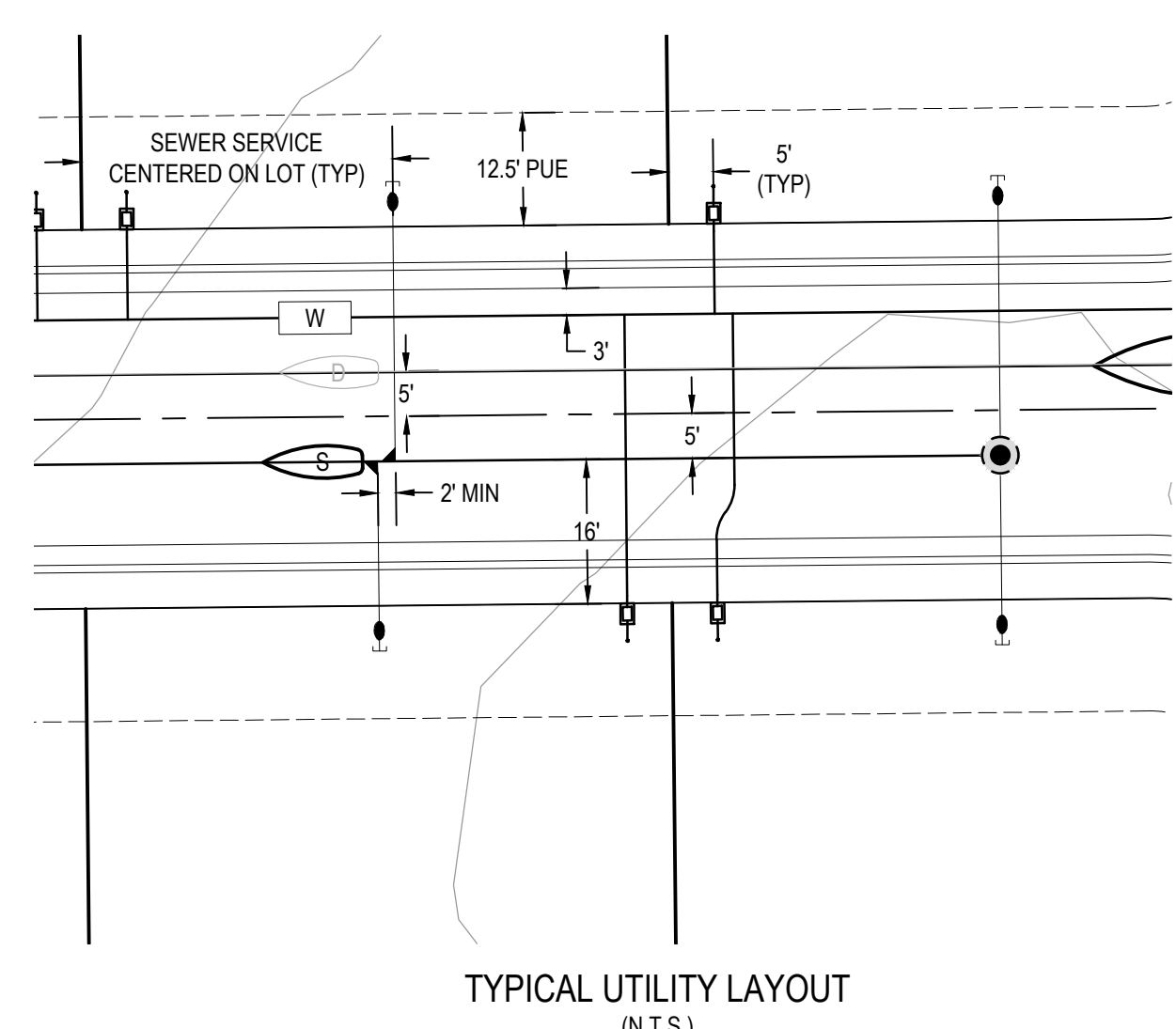
APPROVALS

PRELIMINARY UTILITY PLAN  
 CAMPUS OAKS  
 MASTER PLAN - 3  
 SHEET 3 OF 3



EXISTING	PROPOSED	DESCRIPTION
		SANITARY SEWER PIPE & SIZE
		DOMESTIC WATER PIPE & SIZE
		SANITARY SEWER MANHOLE
		GATE VALVE
		FIRE HYDRANT
		BLOW OFF VALVE
		AIR RELIEF VALVE
		WATER SERVICE
		SEWER SERVICE

SYMBOLS



NO.	DATE	DESCRIPTION

REVISIONS

BENCH MARK

ELEV = 112.83  
 3-1/4" BRASS DISC STAMED L55614, TOP OF CURB  
 WEST SIDE OF DI @ SE CORNER OF WASHINGTON BLVD. &  
 ROSEVILLE PARKWAY @ NE END OF CURB RETURN

COMPUTED BY

DESIGNED BY

DRAWN BY

PROJECT ENGINEER

PROJECT

ENTITLEMENT DRAWINGS FOR  
**CAMPUS OAKS  
 MASTER PLAN**

**CO - 3**  
 ROSEVILLE, CA

DRAWING  
**PRELIMINARY  
 UTILITY PLAN**

DATE  
 JUNE 9, 2021

SCALE  
 1" = 50'

JOB NUMBER  
 13-0076-06

SHEET  
**3**  
 OF  
 3

City of Roseville Approval

